

EDUCATIONAL TRAILS

There are more than 30 educational trails in the City of Prague, which guide the visitors through special protection areas and other nature sites. The City of Prague manages 16 of them; the rest is managed by the municipal districts or non-profit organisations.

On-site information: Traditional information boards at the stops on the educational trail. Additionally, new boards on educational trails have plaques with QR codes (smartphone trails).



Publications, information brochures and leaflets:

- Educational Trails of Prague leaflets (currently only for selected trails)
- other information materials on the educational trails managed by municipal districts and other organisations

Internet:

www.praha-priroda.cz/naucne-stezky/
portalzp.praha.eu/naucnestezky
nastezky.eu



PRAGUE'S NATURE TRAILS

The system of several sets of Prague's Nature trails has been gradually developed since 2010. These sets of trails are thematic – Through Prague along the Streams, Exploring Prague's Protected Trees on Foot and by Public Transport and Unknown Nature of Prague. Other sets of trails are being planned by the selected municipal districts and other organisations.

Trail markers and on-site information: The trails are not currently marked (possible future marking with plaques with QR codes).

Publications, information brochures and leaflets:

- *Prahou podél potoků a dvou řek* (Through Prague along Streams and Two Rivers) publication (published 2005, unavailable);
- Prague's Nature sets of information leaflets (currently 12 variants and more)

Internet:

portalzp.praha.eu/piknikovamista
www.praha-priroda.cz/rekreace-v-prazske-prirode/
portalzp.praha.eu/zapamatnymistromy
portalzp.praha.eu/znama-neznama
www.prazskestromy.cz

NATURE TRIPS FOR CHILDREN Mini zoos, farms, apiaries, playgrounds

The favourite mini zoos are managed by Lesy hl. m. Prahy organisation. You can find them in Malá Chuchle (the largest), Hostivař Forest Park, Kunratice Forest and Kamýk. You can also visit the apiaries newly open to public. Other publicly accessible places (farms, paid zoological exhibitions, etc.) run by other subjects are also worth a visit. Prague's forests, forest parks and regular parks feature a large number of playgrounds and kid-friendly entertainment that can make a good highlight of a trip with your children.

Internet:

lhmp.cz/zachranna-stanice/lesni-zookoutky/
lhmp.cz/ekologicka-vychova/navrat-vcel-do-prazskych-lesu/
www.praha-priroda.cz/rekreace-v-prazske-prirode/
portalzp.praha.eu/zaprirodou

PICNIC SPOTS, FITNESS

Currently, there are 8 picnic spots with campfires in Prague's forests and forest parks, and another 8 picnic spots with portable and two fixed barbecue can be found in parks (managed by the City of Prague). These spots are equipped with furniture for relaxation and a barbecue option. Other picnic spots are managed by other subjects, primarily municipal districts. Picnic spot visitors must follow the relevant rules. Adults and teenagers may also appreciate the outdoor fitness facilities. Some of them are specifically adapted for the elderly.

Internet:

portalzp.praha.eu/piknikovamista
www.praha-priroda.cz/rekreace-v-prazske-prirode/
portalzp.praha.eu/zaprirodou
lhmp.cz/mestske-lesy/piknikova-mista-v-prazskych-lesich/

Prague's Nature Map – Selected Information

portalzp.praha.eu/mapa_zaprirodou

Example from the printed version of the map:



Online version of the map

(app coming soon, expected test operation in summer 2023)

www.geoportalpraha.cz, link Mapové aplikace

Detailed information on individual nature sites and trails, including the points of interest. Public transport connections, bike paths and other useful information for planning trips.

Printed version

The printed version of the map is available to the public, schools, NGOs and other interested parties (last update 2022) at the specified distribution points. It provides selected information on sites and trails at a scale of 1 : 60,000, as well as detailed information on the websites and printed information materials on each topic.

WEBSITES AND APPS

Information on Prague's nature is also available on the city's website and in special apps. Apps for smartphones and tablets are coming soon.

PRAGUE'S NATURE Signpot

portalzp.praha.eu/zaprirodou

portalzp.praha.eu/NEvprirode (NO! in nature)

(part of the City of Prague Environmental Portal)



PRAGUE'S NATURE Website

www.praha-priroda.cz

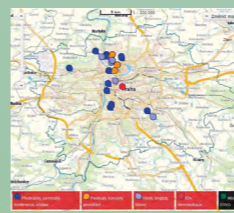
Facebook: www.facebook.com/prazskapriroda

Sections: Bodies of water and streams, Forests, Educational trails, Nature protection, Fruit orchards and alleys, Parks and gardens, Recreation in Prague's nature. Detailed information on nature sites and funded projects.

EVENT CALENDAR for environmental and eco-education events

(as of July 2015, also in map version)

portalzp.praha.eu/kalendar_akci



Other selected websites:

www.lesypraha.cz Lesy hl. m. Prahy website (City of Prague forests) official Prague tourist portal
www.praha-priroda.cz Prague's protected trees website
www.prazskestromy.cz educational trails website and app
nastezky.eu educational trails website and app
www.kudyznudy.cz/Kam-pojedete/hlavni-mesto-praha Czech tourism website (Prague region)

Prague's Nature Signpot



Prague's Nature Website



Event Calendar

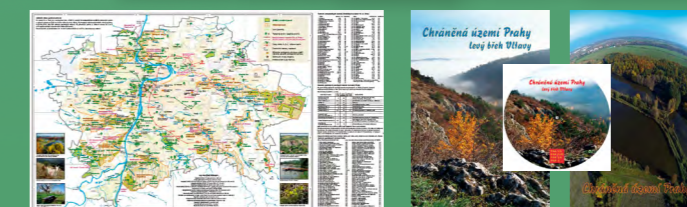


PRINTED INFORMATION MATERIALS AND PUBLICATIONS FOR THE PUBLIC

portalzp.praha.eu/infomaterialy

Since 2007, the City of Prague has prepared comprehensive sets of information materials for the different aspects of Prague's nature and educational trails both for recreational visitors and those who want to know more about the beauty of Prague's nature.

At present, the information sets on **Forests and Forest Parks of Prague, Nature Parks, Educational Trails, Trails along Streams, Trails Exploring Prague's Protected Trees, etc., Prague's Fruit Orchards and Alleys, Prague's Pastures and Prague's Nature Map** are available. These materials should provide the public with comprehensive information on the recreational options in Prague's nature. These sets are further supplemented by information materials on the implemented projects for the revitalisation of Prague's streams and water reservoirs.



Distribuce:

- Prague City Hall Information Centre, Mariánské nám. 2, Prague 1
- Department of the Environment of the Prague City Hall, Jungmannova 29, Prague 1, 4th floor
- Tourist Information Centre PIS - PCT, Rytiřská 12, Prague 1
- Prague City Hall entrance hall (stand opposite the reception) Jungmannova 29, Prague 1
- Selected information centres in Prague's municipal districts.

Published by the City of Prague, Department of the Environment of the Prague City Hall, in 2022. Graphic design: J. Mikeska. Text: Department of the Environment of the Prague City Hall, photos: Department of the Environment of the Prague City Hall, Lesy hl. m. Prahy, Lubomír Stiburek. 1st edition. Not for sale. ISBN 978-80-7647-085-9

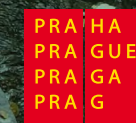
PRAGUE'S NATURE 2022

portalzp.praha.eu/zaprirodou



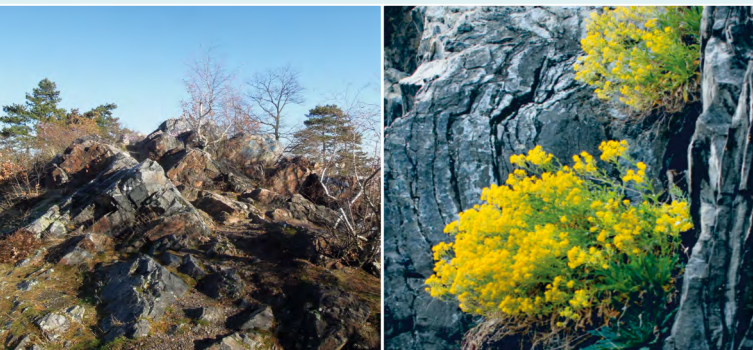
- Overview of protected areas and other natural sites and places of interest
- Trails to explore Prague's nature, on-site information
- Printed information materials, websites, apps
- Distribution and information points

Prague offers its residents and visitors a substantial number of unique natural sites prized both for their scientific importance and available recreational activities. Furthermore, the city also implemented a number of associated revitalisation, reconstruction and renovation projects.



Special Protection Areas (SPA) and NATURA 2000 Network

The City of Prague boasts 93 small special protection areas of approximately 2,428.6 ha. These areas protect natural sites with significant geological phenomena, including fossil sites and protected species of flora and fauna as well their rare natural habitats. These include 8 national nature monuments, 16 nature reserves and 69 nature monuments. In Prague, there are 12 Special Areas of Conservation within the Natura 2000 network.



On-site information:

Signs with the Czech coat of arms and the designation of SPA type, or designated as the "Special Area of Conservation", information boards within the SPA, educational trails through the individual SPAs.

Publications, information brochures and leaflets:

- *Chráněná území Prahy, pravý břeh* (Prague's Protected Areas, Right Bank) publication and CD-ROM (published 2015)
- *Chráněná území Prahy, levý břeh* (Prague's Protected Areas, Left Bank) publication and CD-ROM (published 2016 and 2018)

Internet:

portalzp.praha.eu/zchu
www.praha-priroda.cz/chrana-priroda/
www.geoportalpraha.cz/cs/atlas-zivotniho-prostredi (mapa OPK)
www.natura2000.cz

NATURE PARKS

There are 12 nature parks in Prague. Their designation serves to protect the landscape with significant concentrated aesthetic and natural value. Their total area is approximately 9,333 ha (18.8% of Prague's area).

On-site information: —

Publications, information brochures and leaflets:

- Nature Parks of Prague set of leaflets (13 variants, selected available)

Internet:

portalzp.praha.eu/prirodniparky
www.praha-priroda.cz/chrana-priroda/
www.geoportalpraha.cz/cs/atlas-zivotniho-prostredi
(mapa OPK)



PROTECTED TREES



Significant trees (or groups or alleys) representing various species are designated as protected trees due to their size, age, habitat or as important landmarks or trees of historical importance. Currently, a total of 198 protected trees are designated in the City of Prague.

Signs and on-site information: signs with the lesser Czech coat of arms and designation as "Památný strom" or "Památné stromy"; information boards at 16 sites, plaques with QR codes at selected locations.

Publications, information brochures and leaflets:

- *Památné stromy Prahy* (Prague's Protected Trees) publication and CD-ROM (currently unavailable)
- Exploring Prague's Protected Trees on Foot and by Public Transport
- Map of Prague's Protected Trees trail leaflets (published by Agentura Koniklec)

Internet:

portalzp.praha.eu/zapamatnymistromy
portalzp.praha.eu/pamatnestromy
www.prazskestromy.cz

FORESTS AND FOREST PARKS

All forests in Prague are categorised as special purpose forests – suburban recreational forests. Their total area is approximately 5,251 ha (10.6% of Prague's area, of which approximately 2,836 ha are owned by the city /as of 31 December 2021/) and the proportion of forest land continues to grow due to the afforestation of agricultural land. The FSC® certificate for forest land owned by the City of Prague confirms that these forests are managed in an environmentally friendly and sustainable manner while ensuring all their functions.

Signs and on-site information: information signs in over 20 forests and forest parks in Prague.

Publications, information brochures and leaflets:

- Forests and Forest Parks of Prague information materials (25 variants).

Internet:

www.praha-priroda.cz/lesy/
portalzp.praha.eu/lesyalesoparky



PARKS AND GARDENS

The total area of gardens and parks in the city is approximately 3,965 ha, i.e. about 8% of Prague's area. A significant part is owned by the City of Prague (significant parks and gardens are managed directly by the City of Prague /Petřín, Letenské sady, Vítkov, Stromovka, Hvězda/, the rest is managed by the individual municipal districts).

On-site information: Information boards in parks of city-wide significance.

Publications, information brochures and leaflets:

- Parks and Gardens of Prague set of leaflets (4 variants for parks of city-wide significance)

Internet:

portalzp.praha.eu/parkyazahrady

PRAGUE FRUIT ORCHARDS AND ALLEYS



Fruit orchards and alleys are not there just for fruit production, but they also plan an important role as a biotope, recreational space, landscape feature and cultural heritage. Department

of the Environment of the Prague City Hall manages 75 fruit orchards with a total area of 133 ha, 49 fruit alleys with a total length of 20 km and dispersed fruit trees in 16 other locations. The trees include nearly two hundred different traditional fruit varieties.

On-site information: information boards at selected locations.

Publications, information brochures and leaflets:

- Prague Fruit Orchards and Alleys (in Czech, German and English, updated regularly)

Internet:

www.praha-priroda.cz/ovocne-sady-a-aleje/



WELLS AND SPRINGS



In Prague, there are a number of springs and other natural water sources that witnessed the ancient settlement of the Prague landscape. Currently, there are over 150 registered wells and springs all over the city.

The city conducts annual inspections of springs in selected areas, including water quality analysis. Selected wells and springs gradually undergo reconstruction.

On-site information:

Publications, information brochures and leaflets:

- Wells and Springs of Prague leaflets (11 variants in Czech only, published by Mladí ochránci přírody)

Internet:

www.praha-priroda.cz/vodni-plochy-a-potoky/studanky-abecedne/
www.estudanky.eu

WATERCOURSES



In addition to the Vltava and Berounka rivers, there is approximately 357 km of other smaller watercourses running through Prague (the City of Prague manages and finances 312 km of those watercourses, including the surrounding greenery). The Streams for Life project has been ongoing since 2005.

On-site information: Information boards at the sites of revitalisation and reconstruction projects.

Publications, information brochures and leaflets:

- Revitalisation of Small Watercourses leaflet set (3 variants, also available in English)

Internet:

www.praha-priroda.cz/vodni-plochy-a-potoky/
portalzp.praha.eu/vodnitokyanadrze



WATER RESERVOIRS



There are a number of bodies of water in Prague (dam reservoirs, ponds, retention basins, small pools and lakes, etc.) with an area of approximately 319 ha. The City of Prague owns and finances the maintenance and reconstruction of 132 bodies of water with an area of 268 ha.

On-site information:

Information boards at the sites of revitalisation and reconstruction projects.

Publications, information brochures and leaflets:

- Restoration and Revitalisation of Prague Water Reservoirs leaflets (9 variants)

Internet:

www.praha-priroda.cz/vodni-plochy-a-potoky/
portalzp.praha.eu/vodnitokyanadrze

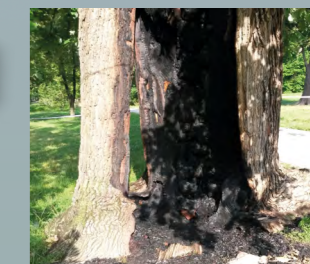
PRAGUE'S NATURE – BE CONSIDERATE AND RESPECT NATURE AND OTHER VISITORS

We ask you to be considerate and treat Prague's nature with respect. Please keep your dogs on a leash and do not feed waterfowl in protected areas. Please keep nature clean and take away any waste you bring. If you are cycling in nature, please keep the safety of others in mind, especially pedestrians. Thank you!



Unfortunately, some cyclists do not respect that cycling is forbidden outside the designated (paved) roads, even in the special protection areas. This leads to significant soil erosion in many locations with dire consequences for tree root systems and other vegetation (photo: Sance Nature Reserve). Irresponsible hikers can also contribute to soil erosion.

The visitors also have a common bad habit of letting their dogs off a leash in places where it is forbidden. Dogs roaming free in protected areas cause serious problems (e.g. hunting animals, disturbing nesting birds, destroying amphibian nests). For hygienic and technical reasons, letting your pets in water fountains is also problematic.



Visitors in nature are often unaware that their irresponsible behaviour can cause significant and often irreparable damage. The lighting of fires outside the designated areas (picnic areas) which causes dangerous wildfires, is one example (photo: a rare oak tree in Stromovka damaged by fire).

Vandalism of nature is also a serious issue. If you encounter any sites damaged by vandalism, please call the local police department (156) and make a record and photo documentation.



Internet: portalzp.praha.eu/NEvprirode (NO! in nature)